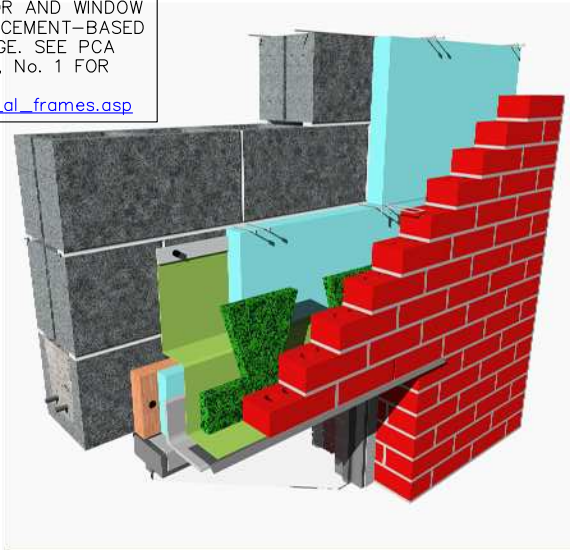


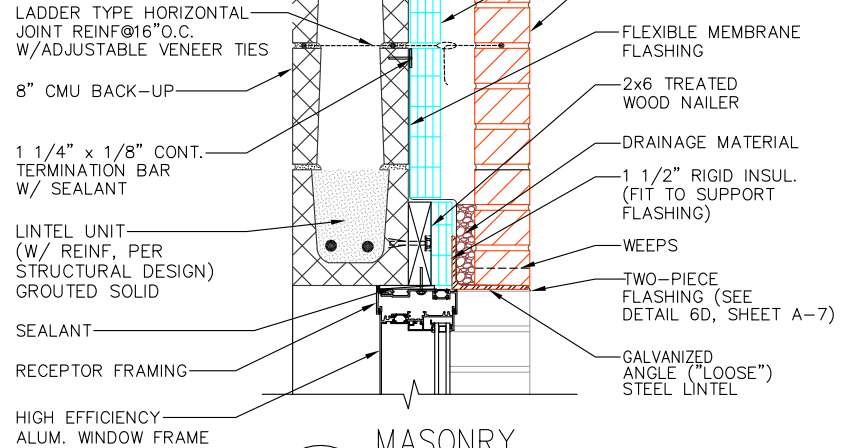
NOTE:

UNPROTECTED ALUMINUM DOOR AND WINDOW FRAMES CAN INTERACT WITH CEMENT-BASED MATERIALS AND INCUR DAMAGE. SEE PCA "MASONRY TODAY" VOLUME II, No. 1 FOR RECOMMENDATIONS.
www.cement.org/masonry/cc_al_frames.asp

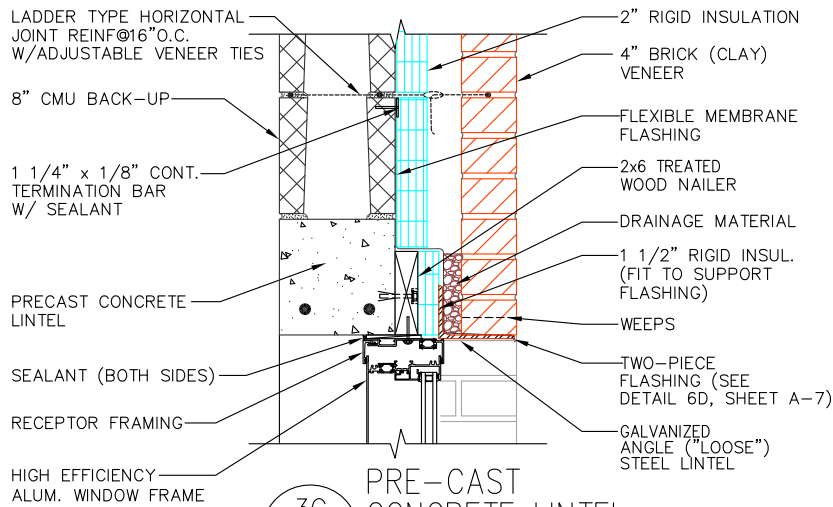


ISOMETRIC VIEW

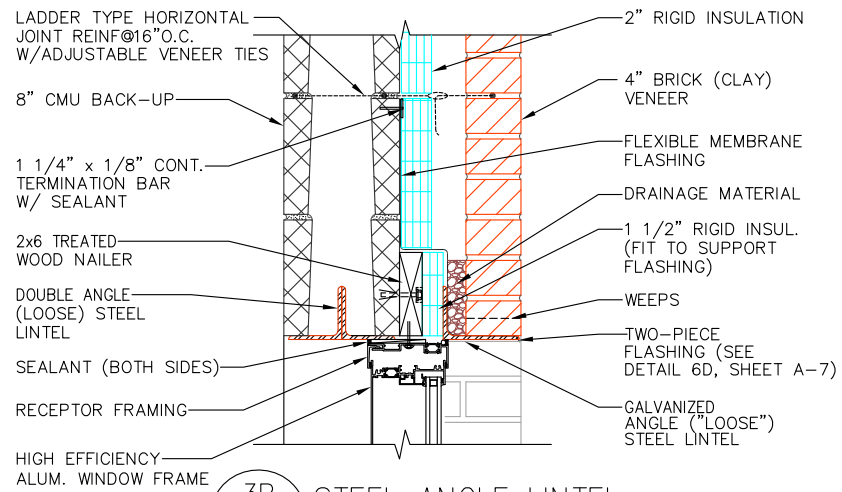
NOTE: MASONRY LINTEL MAY BE PRECAST OR FIELD ASSEMBLED



3A MASONRY LINTEL (PREFERRED)
A-1



3C PRE-CAST CONCRETE LINTEL
A-1



3B STEEL ANGLE LINTEL
A-1

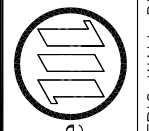
SHORT SPAN LINTELS-WINDOW OPENINGS - USING RECEPTORS

(3 OPTIONS FOR THE CMU BACK-UP)

DAILEY ENGINEERING, INC.
 8486 STEPHENSON ROAD
 ONSTED, MI 48866
 PH. # (517) 467-9000
 FAX # (517) 467-9010



the Masonry Institute of Michigan, Inc.
 GENERIC WALL DESIGN - MULTI WYTHE (8" CMU W/ BRICK VENEER)

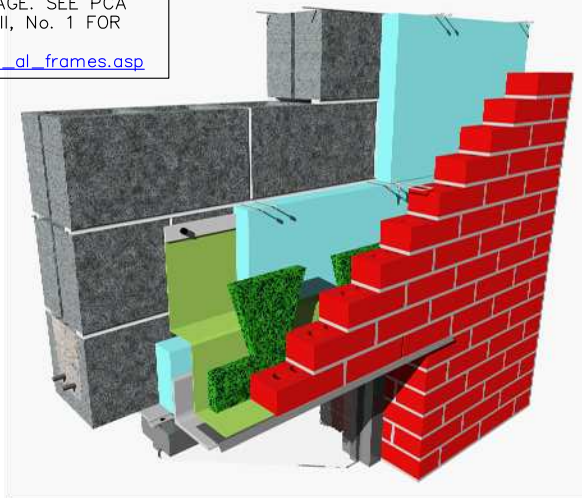


IN CHARGE:	
DRAWN:	M.W.F.
APPROVED:	
DATE:	05/03/2011
TITLE:	SHORT SPAN LINTEL DETAILS-WINDOWS
SHEET:	A-4

The decision to utilize this information is not within the purview of the MIM, and persons making use of this information do so at their own risk. MIM makes no representation or warranties, expressed or implied, with respect to the accuracy or suitability of this information. MIM and its members disclaim liability for damages of any kind, including any special, indirect, incidental, or consequential damages, which may result from the use of this information. This information is not to be interpreted as indicating compliance with, or waiver of, any provision of any applicable building code, ordinance, standard or law.

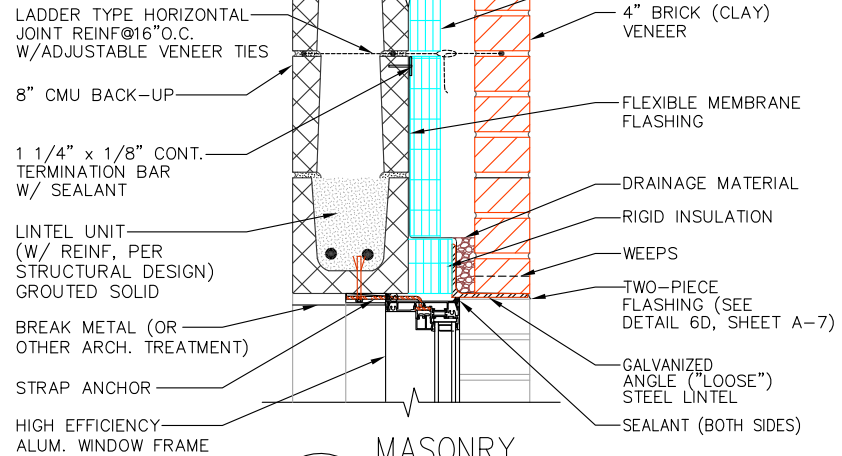
NOTE:

UNPROTECTED ALUMINUM DOOR AND WINDOW FRAMES CAN INTERACT WITH CEMENT-BASED MATERIALS AND INCUR DAMAGE. SEE PCA "MASONRY TODAY" VOLUME II, No. 1 FOR RECOMMENDATIONS.
www.cement.org/masonry/cc_al_frames.asp

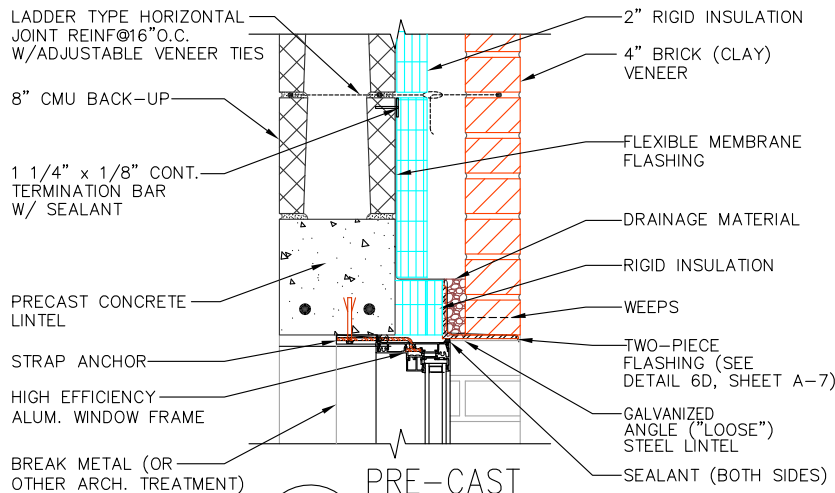


ISOMETRIC VIEW

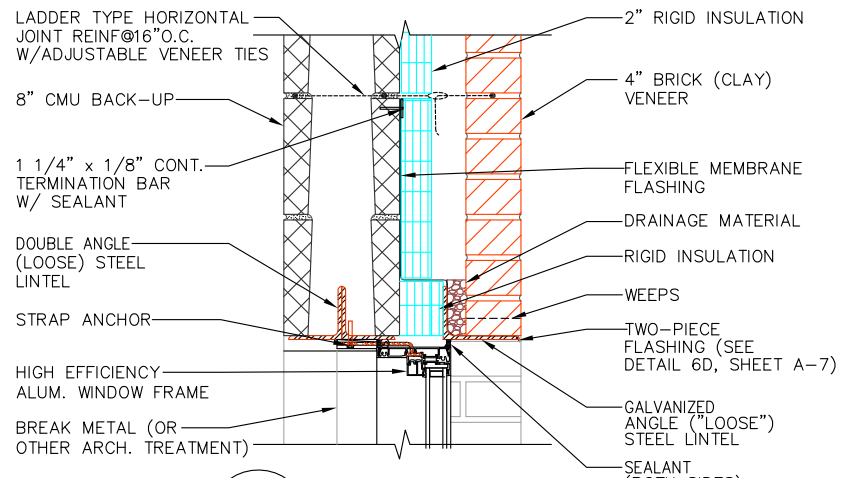
NOTE: MASONRY LINTEL MAY BE PRECAST OR FIELD ASSEMBLED



3A MASONRY LINTEL (PREFERRED)
A-1



3C PRE-CAST CONCRETE LINTEL
A-1



3B STEEL ANGLE LINTEL
A-1

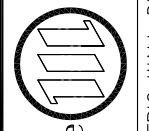
SHORT SPAN LINTELS—WINDOW OPENINGS — USING STRAP ANCHORS

(3 OPTIONS FOR THE CMU BACK-UP)

DAILEY ENGINEERING, INC.
 8486 STEPHENSON ROAD
 ONSTED, MI 48865
 PH. # (517) 467-9000
 FAX # (517) 467-9010



the Masonry Institute of Michigan, Inc.
 GENERIC WALL DESIGN — MULTI WYTHE (8" CMU W/ BRICK VENEER)



IN CHARGE:	
DRAWN:	M.W.F.
APPROVED:	
DATE:	05/03/2011
TITLE:	ALTERNATE SHORT SPAN LINTEL DETAILS—WINDOWS
SHEET:	A-4.1

The decision to utilize this information is not within the purview of the MIM, and persons making use of this information do so at their own risk. MIM makes no representation or warranties, expressed or implied, with respect to the accuracy or suitability of this information. MIM and its members disclaim liability for damages of any kind, including any special, indirect, incidental, or consequential damages, which may result from the use of this information. This information is not to be interpreted as indicating compliance with, or waiver of, any provision of any applicable building code, ordinance, standard or law.

NOTE:

UNPROTECTED ALUMINUM DOOR AND WINDOW FRAMES CAN INTERACT WITH CEMENT-BASED MATERIALS AND INCUR DAMAGE. SEE PCA "MASONRY TODAY" VOLUME II, No. 1 FOR RECOMMENDATIONS.

www.cement.org/masonry/cc_al_frames.asp



ISOMETRIC VIEW

NOTE: MASONRY LINTEL MAY BE PRECAST OR FIELD ASSEMBLED

- LADDER TYPE HORIZONTAL JOINT REINF. @ 16" O.C. W/ADJUSTABLE VENEER TIES
- 1 1/4" x 1/8" CONT. TERMINATION BAR W/ SEALANT
- 8" CMU BACK-UP
- LINTEL UNIT (W/ REINF. PER STRUCTURAL DESIGN) GROUTED SOLID
- DOOR FRAME

- 4" BRICK (CLAY) VENEER
- 2" RIGID INSULATION
- FLEXIBLE MEMBRANE FLASHING
- DRAINAGE MATERIAL
- WEEPS
- TWO-PIECE FLASHING (SEE DETAIL 6D, SHEET A-7)
- GALVANIZED DOUBLE ANGLE ("LOOSE") STEEL LINTEL
- SEALANT (BOTH SIDES)

4A MASONRY LINTEL (PREFERRED)
A-1

- LADDER TYPE HORIZONTAL JOINT REINF. @ 16" O.C. W/ADJUSTABLE VENEER TIES
- 8" CMU BACK-UP
- 1 1/4" x 1/8" CONT. TERMINATION BAR W/ SEALANT
- PRECAST CONCRETE LINTEL
- SEALANT (BOTH SIDES)
- DOOR FRAME
- 4" BRICK (CLAY) VENEER
- 2" RIGID INSULATION
- FLEXIBLE MEMBRANE FLASHING
- DRAINAGE MATERIAL
- WEEPS
- TWO-PIECE FLASHING (SEE DETAIL 6D, SHEET A-7)
- GALVANIZED DOUBLE ANGLE ("LOOSE") STEEL LINTEL

4C PRE-CAST CONCRETE LINTEL
A-1


- 1 1/4" x 1/8" CONT. TERMINATION BAR W/ SEALANT
- LADDER TYPE HORIZONTAL JOINT REINF. @ 16" O.C. W/ADJUSTABLE VENEER TIES
- 8" CMU BACK-UP
- DOUBLE ANGLE (LOOSE) STEEL LINTEL
- DOOR FRAME
- 4" BRICK (CLAY) VENEER
- 2" RIGID INSULATION
- FLEXIBLE MEMBRANE FLASHING
- DRAINAGE MATERIAL
- WEEPS
- TWO-PIECE FLASHING (SEE DETAIL 6D, SHEET A-7)
- GALVANIZED DOUBLE ANGLE ("LOOSE") STEEL LINTEL
- SEALANT (BOTH SIDES)

4B STEEL ANGLE LINTEL
A-1

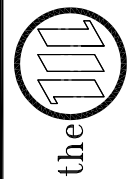
SHORT SPAN LINTELS-DOOR OPENINGS

(3 OPTIONS FOR THE CMU BACK-UP)

DAILEY ENGINEERING, INC.
8486 STEPHENSON ROAD
ONSTED, MI 48265
PH. # (517) 467-9000
FAX # (517) 467-9010



Masonry Institute of Michigan, Inc.
 GENERIC WALL DESIGN - MULTI WYTHE (8" CMU W/ BRICK VENEER)



IN CHARGE:	
DRAWN:	M.W.F.
APPROVED:	
DATE:	05/03/2011
TITLE:	SHORT SPAN LINTEL DETAILS-DOORS
SHEET:	A-5

The decision to utilize this information is not within the purview of the MIM, and persons making use of this information do so at their own risk. MIM makes no representation or warranties, expressed or implied, with respect to the accuracy or suitability of this information. MIM and its members disclaim liability for damages of any kind, including any special, indirect, incidental, or consequential damages, which may result from the use of this information. This information is not to be interpreted as indicating compliance with, or waiver of, any provision of any applicable building code, ordinance, standard or law.