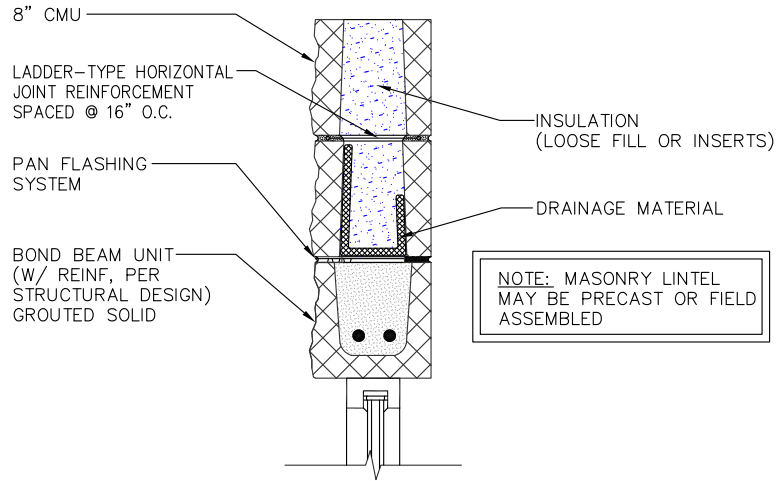
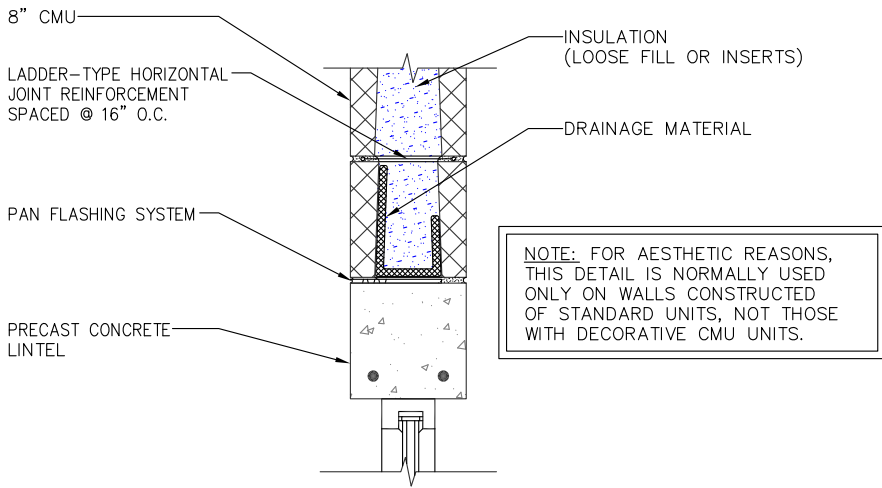


**NOTES:**

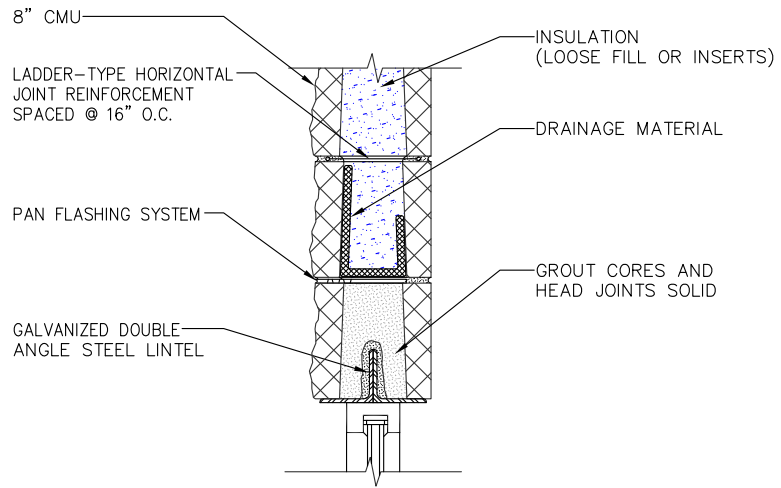
- 1) CONTINUE PAN FLASHING SYSTEM A MINIMUM OF ONE CELL BEYOND BOTH JAMB EDGES OF THE OPENING.
- 2) UNPROTECTED ALUMINUM DOOR AND WINDOW FRAMES CAN INTERACT WITH CEMENT-BASED MATERIALS AND INCUR DAMAGE. SEE PCA "MASONRY TODAY" VOLUME II, No. 1 FOR RECOMMENDATIONS. ([www.cement.org/masonry/cc\\_al\\_frames.asp](http://www.cement.org/masonry/cc_al_frames.asp))



3A MASONRY LINTEL (PREFERRED)  
A-1




3C PRECAST CONCRETE LINTEL  
A-1



3B DOUBLE ANGLE STEEL LINTEL  
A-1

**SHORT SPAN LINTELS**

**DAILEY ENGINEERING, INC.**  
8486 STEPHENSON ROAD  
ONSTED, MI 48866  
PH. # (517) 467-9000  
FAX # (517) 467-9010



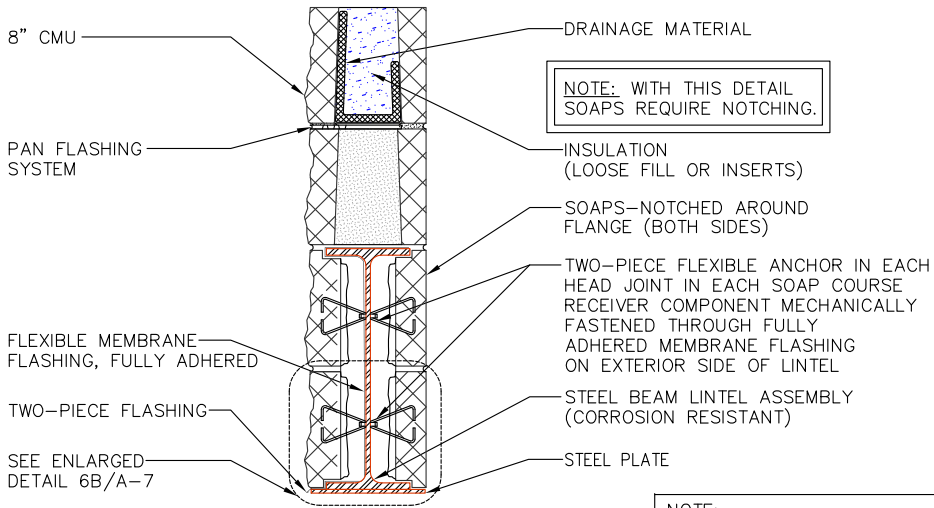
**the Masonry Institute of Michigan, Inc.**



GENERIC WALL DESIGN - 8" SINGLE WYTHE CMU

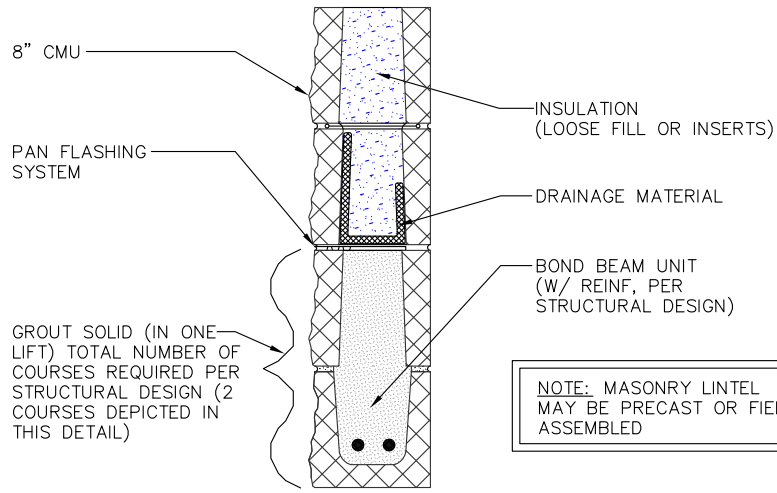
IN CHARGE:	
DRAWN:	M.W.F.
APPROVED:	
DATE:	05/03/2011
TITLE:	SHORT SPAN LINTEL DETAILS
SHEET:	A-4

The decision to utilize this information is not within the purview of the MIM, and persons making use of this information do so at their own risk. MIM makes no representation or warranties, expressed or implied, with respect to the accuracy or suitability of this information. MIM and its members disclaim liability for damages of any kind, including any special, indirect, incidental, or consequential damages, which may result from the use of this information. This information is not to be interpreted as indicating compliance with, or waiver of, any provision of any applicable building code, ordinance, standard or law.



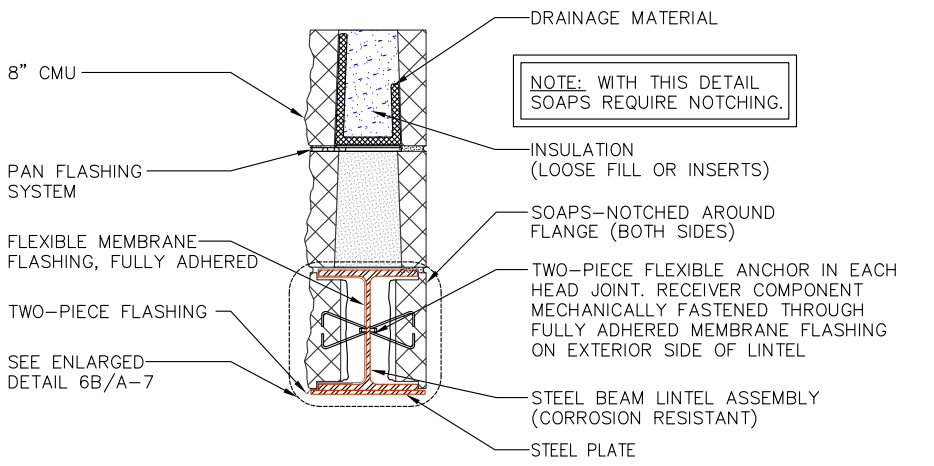
NOTE: WITH THIS DETAIL SOAPS REQUIRE NOTCHING.

4D 16" STEEL LINTEL (W16 SERIES)  
A-1



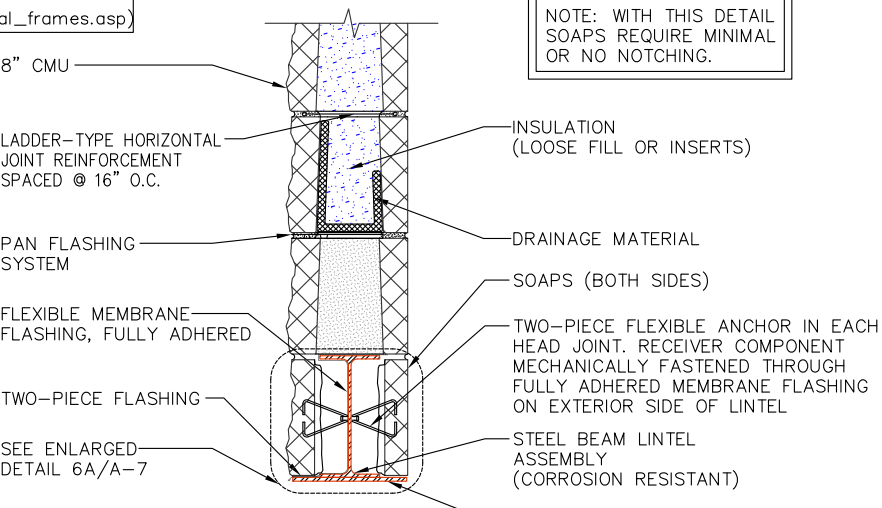
NOTE: MASONRY LINTEL MAY BE PRECAST OR FIELD ASSEMBLED

4A MASONRY LINTEL (PREFERRED)  
A-1



NOTE: WITH THIS DETAIL SOAPS REQUIRE NOTCHING.

4C WIDE FLANGE 8" STEEL LINTEL (W8 SERIES)  
A-1



NOTE: WITH THIS DETAIL SOAPS REQUIRE MINIMAL OR NO NOTCHING.

4B NARROW FLANGE 8" STEEL LINTEL (W8 SERIES)  
A-1

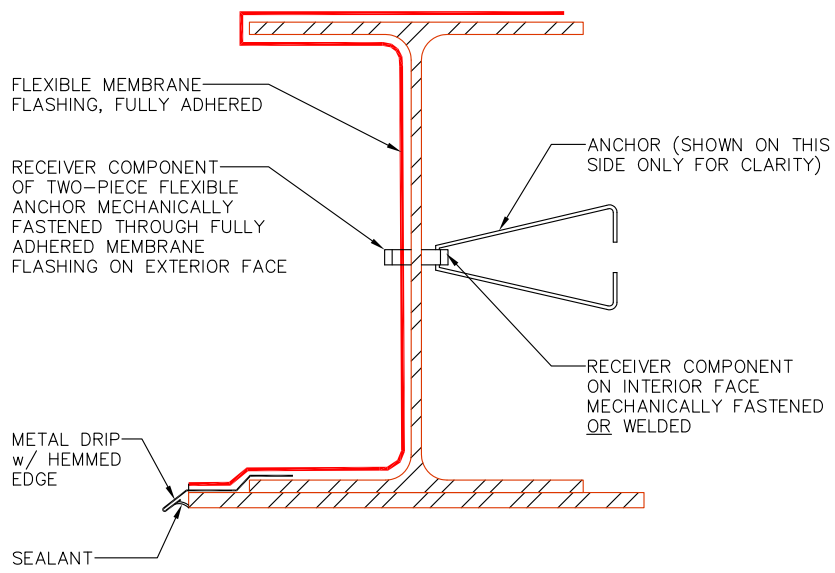
LONG SPAN LINTELS

IN CHARGE:	
DRAWN:	M.W.F.
APPROVED:	
DATE:	05/03/2011
TITLE:	LONG SPAN LINTEL DETAILS
SHEET:	A-5

The decision to utilize this information is not within the purview of the MIM, and persons making use of this information do so at their own risk. MIM makes no representation or warranties, expressed or implied, with respect to the accuracy or suitability of this information. MIM and its members disclaim liability for damages of any kind, including any special, indirect, incidental, or consequential damages, which may result from the use of this information. This information is not to be interpreted as indicating compliance with, or waiver of, any provision of any applicable building code, ordinance, standard or law.

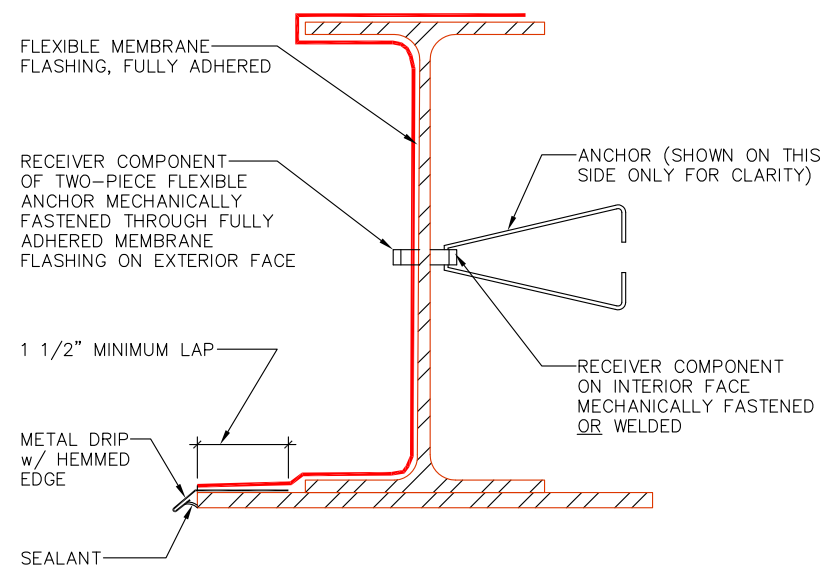
NOTE: THIS DETAIL PERTAINS TO STEEL LINTELS W/ FLANGE WIDTHS OF 5 1/4" TO 5 1/2". FOR NARROW FLANGE WIDTHS, SEE DETAIL 6A. FOR FLANGE WIDTHS GREATER THAN 5 1/2" THE METAL DRIP EDGE LIKELY WILL NEED TO BE OMITTED.

(CMU NOT SHOWN FOR CLARITY)

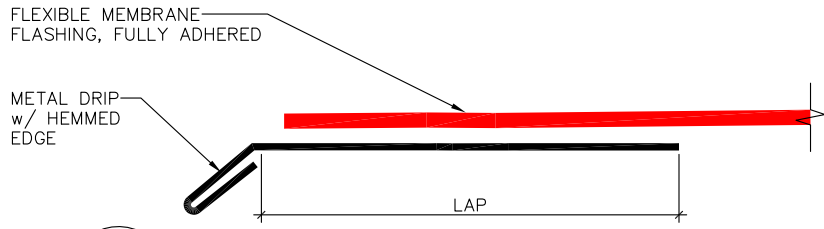


6B  
A-5  
ENLARGED FLASHING DETAIL AT WIDE FLANGE STEEL LINTELS

(CMU NOT SHOWN FOR CLARITY)




6A  
A-5  
ENLARGED FLASHING DETAIL AT NARROW FLANGE STEEL LINTELS



6C  
A-5  
ENLARGED TWO-PIECE FLASHING DETAIL

DAILEY ENGINEERING, INC.  
8485 STEPHENSON ROAD  
ANN ARBOR, MI 48106  
PH. # (517) 467-9000  
FAX # (517) 467-9010

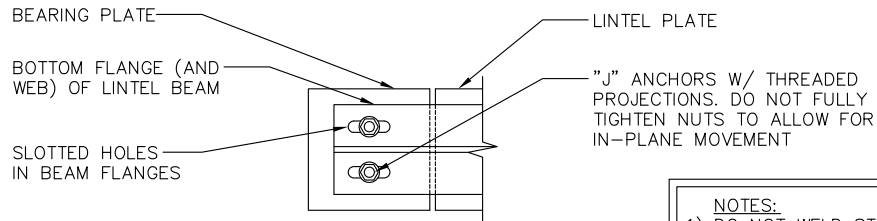


the Masonry Institute of Michigan, Inc.

GENERIC WALL DESIGN - 8" SINGLE WYTHE CMU

IN CHARGE:	
DRAWN:	M.W.F.
APPROVED:	
DATE:	05/03/2011
TITLE:	TWO-PIECE FLASHING DETAILS
SHEET:	A-7

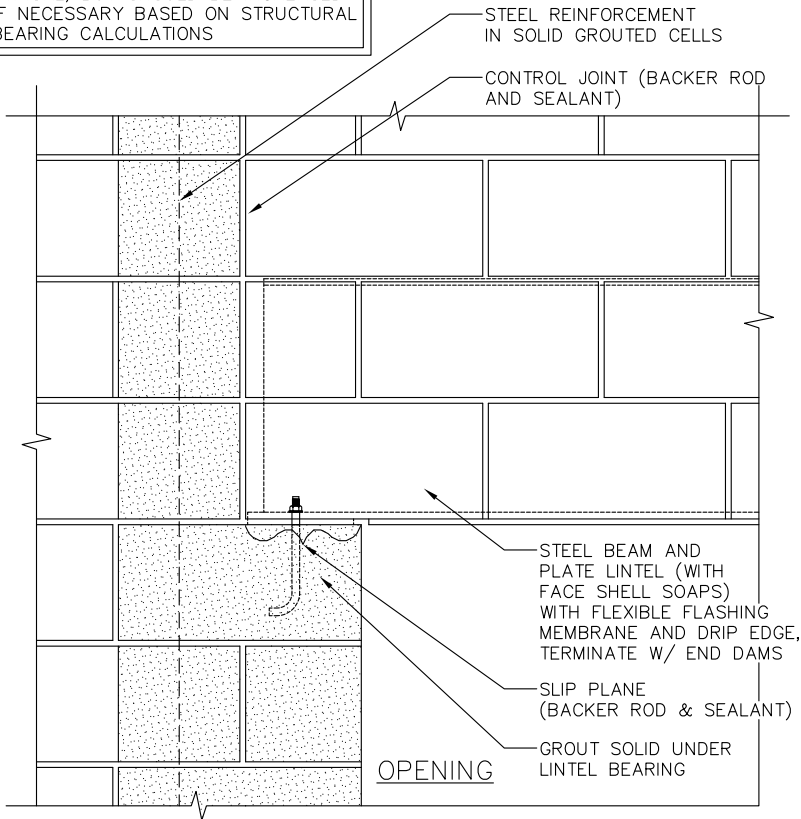
The decision to utilize this information is not within the purview of the MIM, and persons making use of this information do so at their own risk. MIM makes no representation or warranties, expressed or implied, with respect to the accuracy or suitability of this information. MIM and its members disclaim liability for damages of any kind, including any special, indirect, incidental, or consequential damages, which may result from the use of this information. This information is not to be interpreted as indicating compliance with, or waiver of, any provision of any applicable building code, ordinance, standard or law.



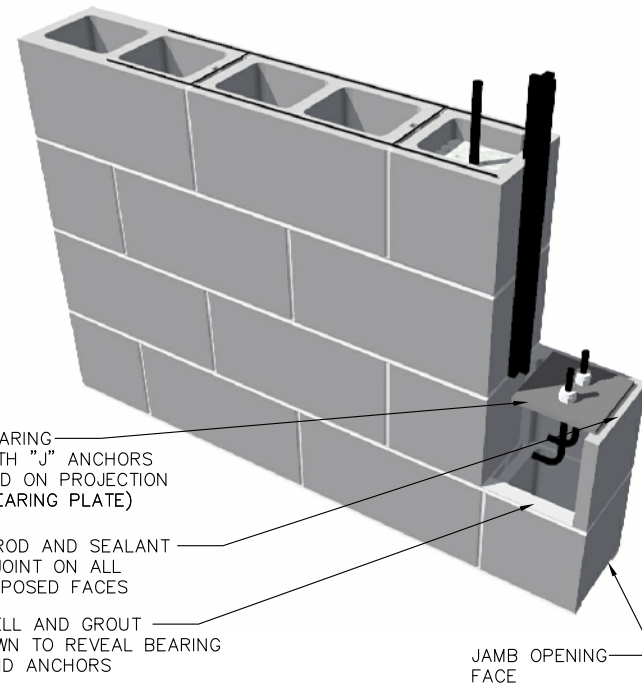
PLAN OF LINTEL/BEARING PLATE

NOTE: 8" BEARING IS SHOWN AND IS TYPICAL, BUT SHOULD BE INCREASED IF NECESSARY BASED ON STRUCTURAL BEARING CALCULATIONS

- NOTES:
- 1) DO NOT WELD STEEL BEAM PLATE LINTEL TO BEARING PLATE (TYPICAL BOTH SIDES).
  - 2) STEEL BEAM TO HAVE SLOTS ON BOTTOM FLANGES TO ALLOW FOR IN-PLANE MOVEMENT.



ELEVATION VIEW



ISOMETRIC VIEW

10  
A-11

SLIP PLANE/CONTROL JOINT  
@ LONG SPAN STEEL LINTELS

DAILEY ENGINEERING, INC.  
8486 STEPHENSON ROAD  
ONSTED, MI 48865  
PH. # (517) 467-9000  
FAX # (517) 467-9010

the Masonry Institute of Michigan, Inc.  
GENERIC WALL DESIGN - 8" SINGLE WYTHE CMU

IN CHARGE:	
DRAWN:	M.W.F.
APPROVED:	
DATE:	05/03/2011
TITLE:	SLIP PLANE/ CONTROL JOINT @ STEEL LINTELS
SHEET:	A-11

The decision to utilize this information is not within the purview of the MIM, and persons making use of this information do so at their own risk. MIM makes no representation or warranties, expressed or implied, with respect to the accuracy or suitability of this information. MIM and its members disclaim liability for damages of any kind, including any special, indirect, incidental, or consequential damages, which may result from the use of this information. This information is not to be interpreted as indicating compliance with, or waiver of, any provision of any applicable building code, ordinance, standard or law.