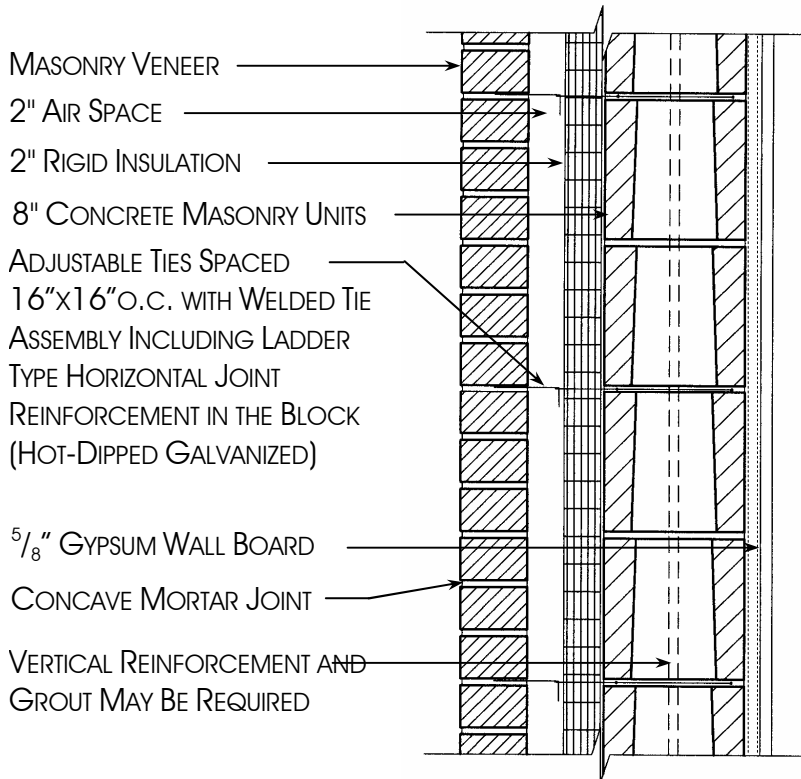


# BRICK VENEER BLOCK BACKUP-2

**REINFORCED COST: \$25.63/sf\***

**UNREINFORCED COST: \$25.08/sf\***



## ADVANTAGES

- DURABLE
- ECONOMICAL CONSTRUCTION COST
- EXCELLENT FIRE RATING
- EXCELLENT WATER RESISTANCE
- GOOD THERMAL RESISTANCE
- INNER WYTHE CAN BE STRUCTURAL LOADBEARING AND CAN PROVIDE INTERIOR FINISH
- INNER WYTHE PROVIDES TEMPORARY ENCLOSURE DURING CONSTRUCTION
- LOWER MAINTENANCE COST
- LOW SOUND TRANSMISSION
- THERMAL MASS EFFICIENCY

## DISADVANTAGES

**WEIGHT OF WALL**

**\*THE FIGURES REPRESENT TOTAL COST INCLUDING LABOR, MATERIAL, OVERHEAD, AND PROFIT. ALL MASONRY WALL COSTS WERE BASED ON A STRAIGHT RUN WALL WITH NO OPENINGS. THE COST WILL BE GREATER WHEN CONSIDERING OPENINGS, CORNERS, SITE CONDITIONS, MATERIAL HANDLING CONDITIONS AND WEATHER. USE FOR COMPARATIVE PURPOSES ONLY AND NOT AS AN ESTIMATE.**